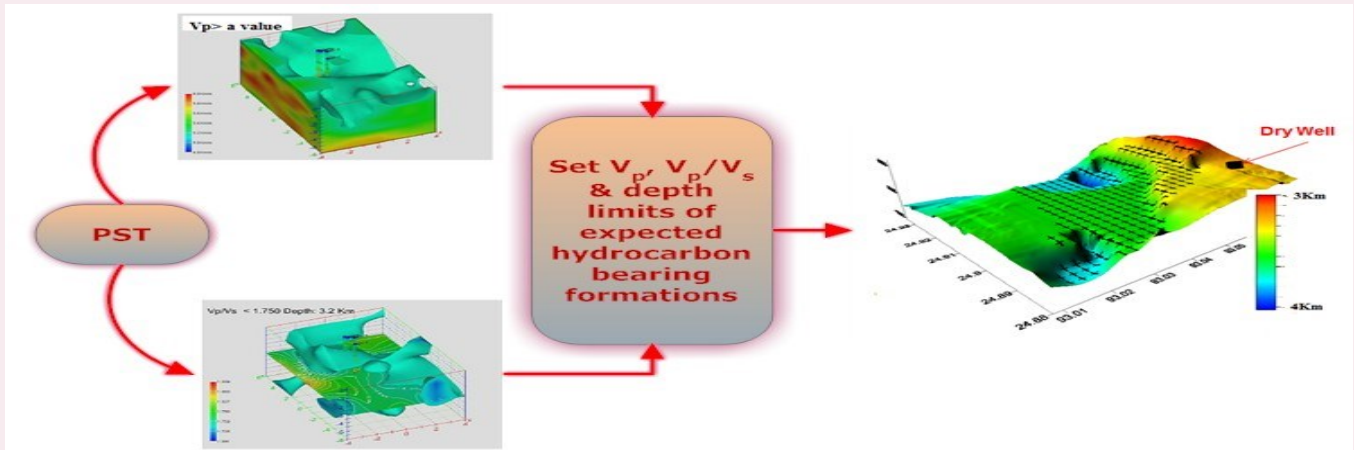


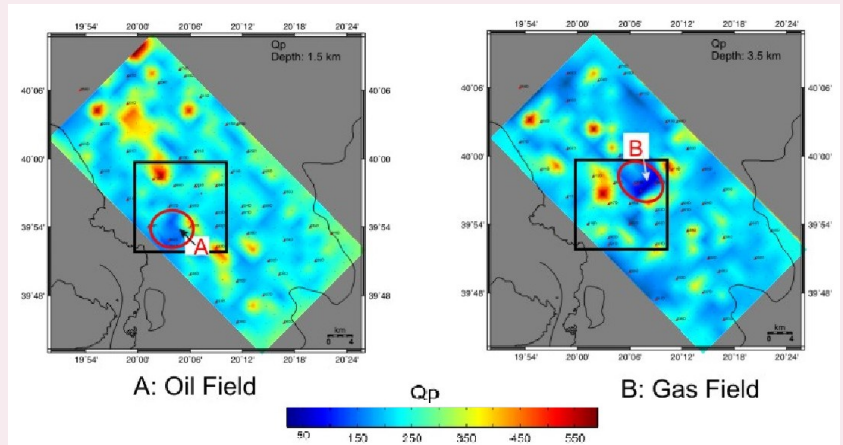
Where to Drill?

Although a *Passive Seismic Tomography (PST)* survey provides mainly, structural and lithological information below the entire block of interest and cannot be considered as a *direct hydrocarbon indicator* in certain cases **we can provide maps which depict sub regions within the investigated block possessing high probability for a successful well**. This is due to the fact that one of the products of PST is V_p and the Poisson's ratio which strongly depends on the fluid content within the pore space.



Furthermore, the mapping of the Q parameter all over an exploration block could reveal regions of *high porosity, fracture zones and differentiate gas and oil in the pore space*.

Q sections over a well known oil and gas field respectively. The decrease of Q (increase of attenuation) is obvious at the oil and gas depths.



www.landtechsa.com
When the Earth Whispers We Are There!